



ASSEMBLY MANUAL

LOG PERIODIC ANTENNA

CD-95Y

88~108MHz

1st edition 2000-4

注 意

このアンテナの組立と据付工事をする前に必ずこの取説を全部読んでから始めて下さい。アンテナの組立と据付は専門的な経験を必要とします。この取説はアンテナ工事の経験者を対象として説明されています。全く経験のない者がこのアンテナ工事をしてはいけません。CDでは未熟者によって危険な施工がなされ、不具合が生じてもその責任は負い兼ねます。もしアンテナ工事の建設についての相談や手助が必要な場合は当社代理店又は直接当社宛に問い合わせして下さい。

WARNING

Installing and rigging masts and antennas require highly specialized skills and experience. This drawing and the instructions within assume that personnel involved have these skills and have installed similar products before. No one should attempt to install this antenna without these skills and experience. CD can assume no liability if faulty or dangerous installation practices are used. CD has factory trained personnel to assist in installation. Please contact your CD representative if consultation or assistance is required.

警 告

このマニュアルの一部又は全てを、当社の許可なく転載及び複製することを禁じます。
クリエート・デザイン株式会社

NOTICE

All rights in this publication are reserved. No part of the publication may be reproduced without the expressed written permission of CREATIVE DESIGN Corp.

GENERAL SPECIFICATIONS

CD-95Y LOG PERIODIC ANTENNA

1 GENERAL INFORMATIONS

Model CD-95Y is a high gain, FM Broadcast Band log periodic type directional antenna. The antenna is designed for either horizontal or vertical mounting. A special vertical mounting bracket is enclosed for vertical polarization. This special bracket avoids negative influences from the mounting mast to the radiation pattern.

Forward gain of the CD-95Y from 88~108 MHz is 7~8 dBi, with VSWR of less than 1.5:1 across the entire band. No tuning is necessary.

Mechanically, the CD-95Y uses a specially designed, high quality aluminum boom that works as a phasing line. In addition, the pattern distortions in the vertical and horizontal planes have been minimized, and adjustment to the element alignment is not necessary. With no tuning or element adjustments required, assembly of the CD-95Y is very easy.

The boom to mast brackets are made of a lightweight yet very rugged magnesium alloy for a secure and reliable installation.

2 SPECIFICATIONS

Frequency	88~108 MHz
Number of Elements	6 Elements
Polarization	Horizontal or Vertical

(Special vertical mounting bracket included)

Forward Gain	7~8 dBi(5~6dBd)
Front to Back Ratio, Average	15 dB

Half Power Point	E-Plane	60~70°
	H-Plane	110~120°

Impedance 50 Ohms

Input Connector Type -NJ-

VSWR 1.5:1 or less

Power Rating, CW/PEP. 250W/500W

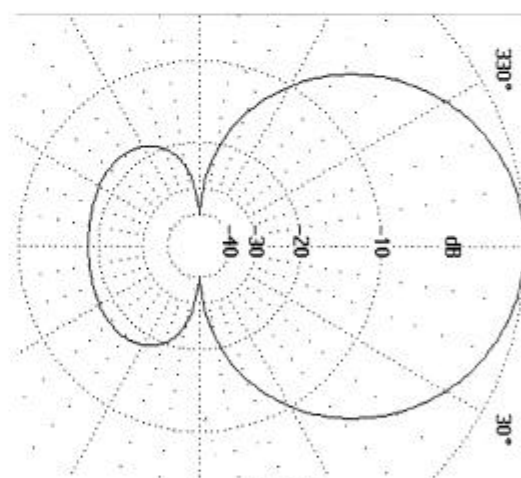
Longest Boom Length 45 Inch(1.15 m)

Longest Element Length 71 Inch(1.8 m)

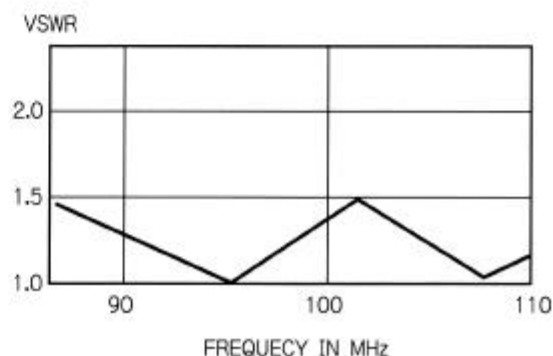
Mast Size 1-5/8~2 Inch(42~50 mm)

Weight 7 lbs 7 ozs(3.5 kg)

Wind Survival Rating 90 mph(40 m/sec.)



98MHz
Radiation Pattern, E-Plane



FREQUENCY IN MHz
VSWR Curve

3. ASSEMBLY

After unpacking check if all the parts are orderly included referring to the parts list, also if there are no damaged parts. Follow the instruction contained in the warranty which is on the back side of the front cover of this instruction manual if any parts are missing or damaged. Assembly of the CD-95Y is illustrated in Fig. 1. Main parts constructed this antenna are preassembled. Proceed the assembly in the following steps.

1) ELEMENT ASSEMBLY (See DETAIL-A and B)

Insulators in the boom are preassembled. Assemble the each element E1~E6 by inserting them into plastic insulator in the boom. Securely fix them with S2 screw.

2) ARRESTER ASSEMBLY (See DETAIL-D)

Fix the arrester coil at rear end of the boom with S1 screw as shown in DETAIL-D. Adjust the coil width as to set it within 18~22mm.

3) ANTENNA MOUNT (See DETAIL-E and F)

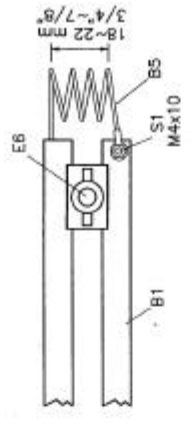
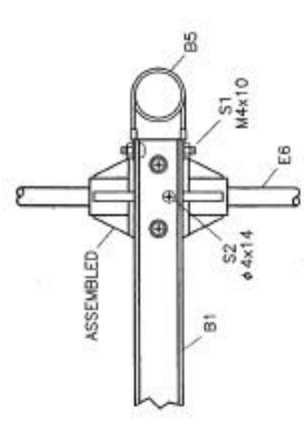
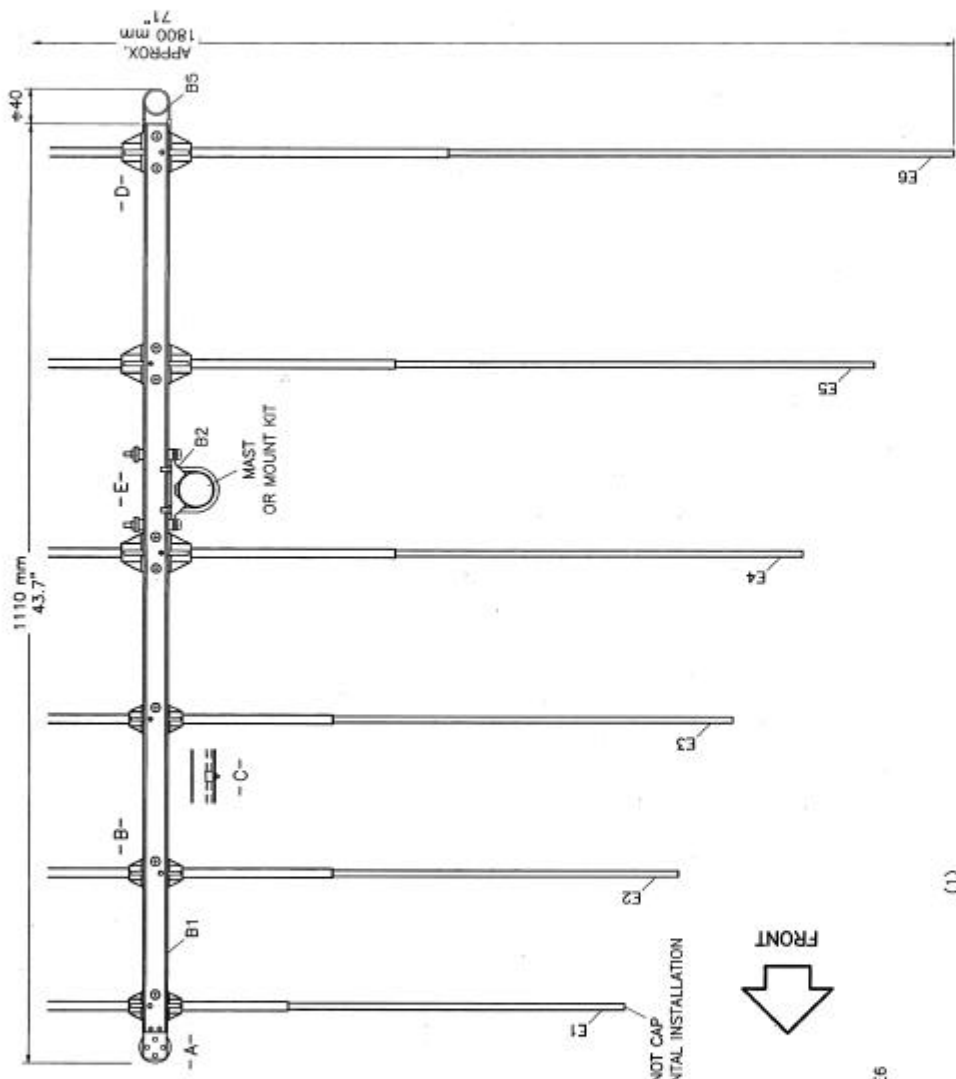
Determine the polarization of the antenna either horizontally or vertically as to fit into the application desired.

3-1) Horizontal Mode Mount

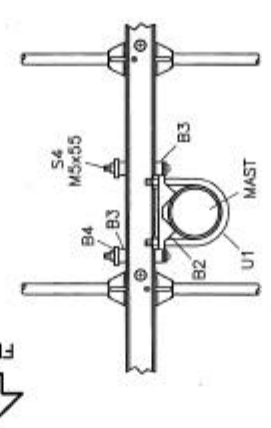
Mount the antenna on your mast tubing with mast bracket B2 as shown in DETAIL-E.

3-2) Vertical Mode Mount

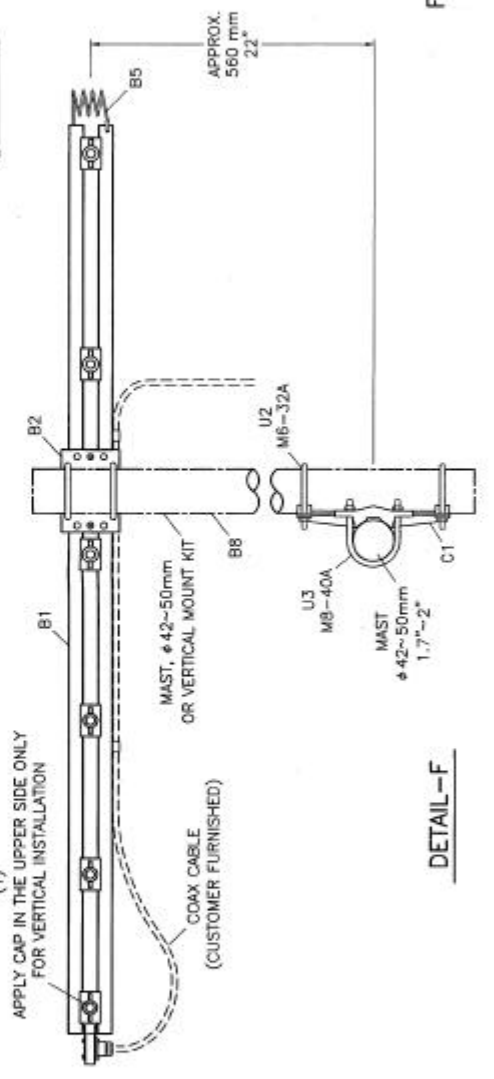
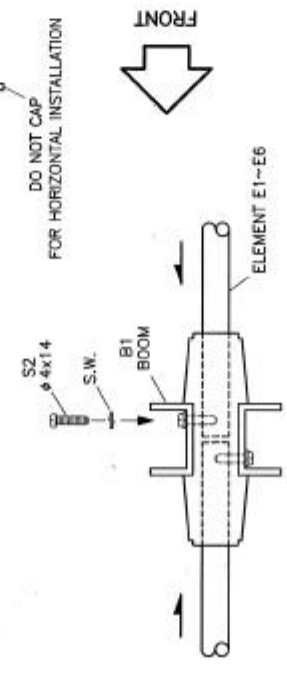
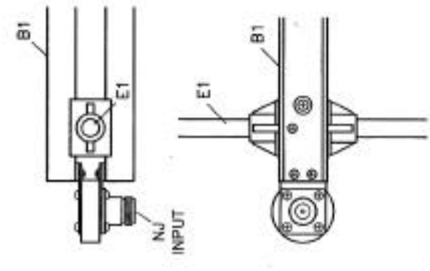
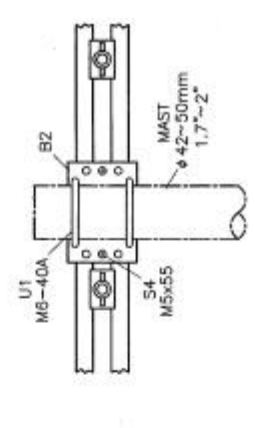
Mount the antenna with B8 tubing of vertical mount kit as shown in the DETAIL-F.



DETAIL-D



DETAIL-E



DETAIL-C

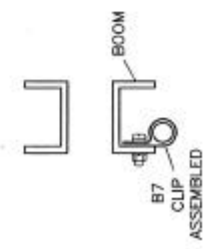


Figure 1. CD-95Y, Log Periodic Antenna.
88~108MHz.
NCC CO. CMN-1003 DWGA.035D

PARTS LIST

LP-Antenna Model CD-95Y

CMN-1004

ITEM	DESCRIPTION			QTY
B 1	BOOM ASSY.	2-CH 16×27×1110 (2-CH 0.63"×1.06"×43.7") w/Insulator	Alum.	1
B 2	MAST CLAMP	AL-90	Alum.	1
B 3	BLOCK	7×18×52 (0.28"×0.71"×2.05")	P.V.	4
B 4	STRAP	20×45 (0.79"×1.77")	Alum.	2
B 5	COIL	D27-4t (D1.06-0.16t)	Nick.	1
B 6	BUSH	D12×11 (D0.47"-0.43"t) Preassembled	P.V.	18
B 7	SADDLE	KT-4 w/Screw Preassembled	P.N.	2
B 8	MOUNT BOOM	D43×760 (D1.7"×30")	Alum.	1
E 1	TUBE	D7-10×530 (D0.28"-0.39"×20.87")	Alum.	2
E 2	TUBE	D7-10×590 (D0.28"-0.39"×23.23")	Alum.	2
E 3	TUBE	D7-10×651 (D0.28"-0.39"×25.63")	Alum.	2
E 4	TUBE	D7-10×730 (D0.28"-0.39"×28.74")	Alum.	2
E 5	TUBE	D7-10×810 (D0.28"-0.39"×31.89")	Alum.	2
E 6	TUBE	D7-10×900 (D0.28"-0.39"×35.43")	Alum.	2
C 1	BOOM CLAMP	MC-90	Alum.	1
S 1	SCREW	M4×10 W, N.	Sus.	2
S 2	SCREW	D4×14 W.	Sus.	12
S 3	SCREW	M4×35 W, N. Preassembled	Sus.	9
S 4	SCREW	M5×55 W, N.	Sus.	2
U 1	U-BOLT	M6-40A W, N.	Sus.	2
U 2	U-BOLT	M6-32A W, N.	Sus.	2
U 3	U-BOLT	M8-40A W, N.	Galv.	2
I	CAP	D7×8 (D0.28"×0.31") (For Vertical Inst.)	P.V.	6